

JOHANN LOETZ WITWE

MARIE KIRSCHNER PN 1090/82 – 1903 / 1904

Details:

Manufacturer: Johann Loetz (Lötz) Witwe

Designer: Marie Kirschner

Execution: Candia Optisch Glatt Iris mit Höhlung

Signature: Unsigned

Production number: Comm. 1090/83

Style: Jugendstil

Material: Mould-blown and free-formed glass, reduced with a concave pontil & applied handles

Color: Candia

Period: 1900 / 1909

Dimensions:

Height: 20cm / 7.87"

Diameter body: 30cm / 11.81"

Diameter top: 18,5cm / 7.28"



Condition: Mint

Provenance: German private collection

Literature:

Prestel – Böhmisches Glas 1880 – 1940 Band 1 Werkmonographie. Page 198
199, 200 & 201.

Prestel – Böhmisches Glas 1880 – 1940 Band 2 Katalog der Musterschnitte.
Page 344 & 562.

Description:

This impressive Art Nouveau floral bowl was designed by the renowned artist Marie Kirschner during the period 1903/1904 and executed by Johann Loetz Witwe. The bowl is made of Candia glass (colorless glass) that has been optically blown. This glassblowing technique creates a subtle interplay of light and shadow across the transparent surface.

With a generous height of 20 cm and a diameter of 30 cm, this bowl ranks among the largest objects within Kirschner's body of work. Four elegantly shaped handles are hot-applied to the rim, serving not only as functional elements but also contributing to the sculptural character of the design.

A striking feature of the bowl is its elevated center on the interior, which is also clearly visible in the original design drawing. This central elevation was intended to support and arrange flowers in a refined manner, preventing them from sliding—thus transforming the bowl into a functional art object.

The glass is executed in the spectacular Glatt Iris décor, resulting in a fascinating magical purple iridescence. Depending on the angle of the light, the color subtly shifts from gold to violet to deep purple. In direct sunlight, the bowl reveals a magical brilliance that is nearly impossible to capture in photographs. This is a typical hallmark of Loetz's mastery in iridescent glassmaking.

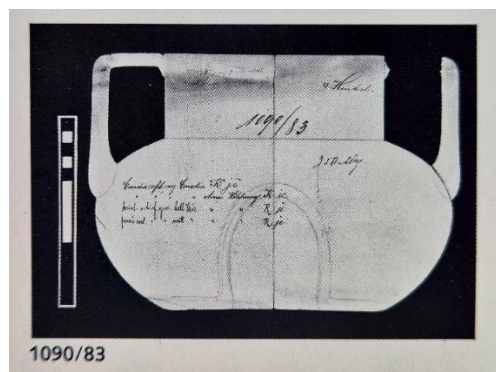
The bowl is documented in the literature under production number 1090/83, and was specifically designed by Marie Kirschner on commission.

About Marie Kirschner

Marie Louisa Kirschner (1852–1931), born in Prague, was a Czech-German painter, designer, and glass artist. Coming from a wealthy family, she developed her artistic talents in cities such as Vienna, Munich, and Paris. She later settled in Berlin, where she and her sister Lola (the well-known writer Ossip Schubin) hosted a cultural salon frequented by artists, writers, and musicians.

At the beginning of the 20th century, Kirschner began collaborating with Johann Loetz Witwe. Initially, she painted design proposals, but she quickly grew into an important designer for the glassworks. Between around 1900 and 1913, she submitted 277 designs to Loetz, making an essential contribution to the artistic direction of the company. Kirschner's style is characterized by timeless elegance, refined forms, and balanced compositions, rather than extravagant organic shapes. Her designs often feature softly colored transparent glass with a matte or intense iridescence.

This exceptional bowl is an impressive example of her pursuit of aesthetic simplicity combined with technical innovation, and it stands as an important collector's item in the history of Jugendstil glass art.



Comm. Productionnummer 1090/83

Circa 1903 / 1904